



YOUR FUTURE SECURED



Security Grilles and Cages Brochure

Harling Security Solutions

Regent house
Queens Road
Barnet

Herts EN5 4DN

Tel: +44 (0)84 5177 0540 **Fax:** +44 (0)84 5177 0541 **Email:** sales@harlingsecurity.com

Web: www.harling-security.co.uk



Internally mounted double sash Sliding Grille type HS1011, insurance rated grille to LPCB level1



Retail Installation of Sliding Grille type HS1010, non insurance rated type

Service

- Design
- Survey
- Manufacture
- Install
- Maintenance and repairs

Applications

- Commercial
- Residential
- Schools and Colleges
- Government Buildings
- New build and refurbishment projects

Grille types

- Fixed
- Sliding
- Bi-Parting
- Insurance rated LPCB 1&2
- Hinge away grille stacks
- Secured by design
- Mesh grilles
- X-Lattice
- S-Lattice
- Hinge up track
- Removable track
- Bespoke design
- Curved track type
- Trackless systems
- Wrought iron

Options

- Electric locks
- 3 point locking
- Powdercoat colours
- Handles
- Locks keyed alike



Large Sliding Grille type HS1010
(which is non insurance rated)



Doorway Grille closed
type HS1011
(Insurance rated version)



Doorway Grille opened

Introduction

Harling security is a specialist manufacturer and supplier of a wide range of security systems for property protection for both new build and refurbishment works. From its comprehensive range, security shutters, fire shutters and other products comprising steel gates, specialised shutters, steel doors, cages, strong rooms, crime shields, screens, louvre panels, sliding grille and security fencing.

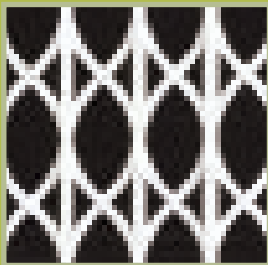
Harling security is a family firm that has years of experience with highly trained operatives and offers a wide range of services for small to large projects. The company is experienced in design, manufacture and installation of physical security products to meet all requirements and is a dedicated company working from the initial design concept through to final installation and after-sales service. The company pursues rigorous testing and maintains continually high standards so that applicable products will comply with current and future CE Regulations. Products have police preferred specification, have achieved LPCB 1 to 4 ratings and are insurance approved, as well as being Secured by Design to SEAP Class 2.



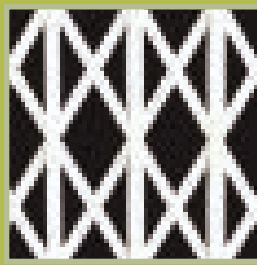
Sliding grille with 3 point locking system and aluminium flush handle. These are available as secured by design



Hinge up track option to avoid trip hazard



S lattice option for grilles



X lattice option for grilles

Warranties and Maintenance

All products carry a 12 month minimum parts and installation warranty. Motorised products carry up to a 5 year parts warranty on various motors depending on specification and requirements. Service contracts and maintenance agreements are offered as part of the package to provide ongoing service. This is backed up by a repair and emergency call out operation, for peace of mind. Your future secured

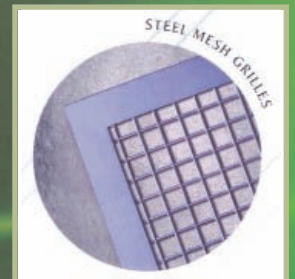


Crime Shield screens fitted to lower office windows to provide vandal and glass protection. HS Shoreshield type



Crime Shield screens installed to commercial unit for glass protection, HS Shoreshield type

HS Shoreshield





HS Shoreshield screen viewed from inside



Anti Climb Spikes and Steel gate



YOUR FUTURE SECURED



GSCS





Residential installation of grille type HS1010



Burglar bars powder coated white, HS secure bar

YOUR FUTURE SECURED



Lockable Security Cages for storage of valuables, computer equipment and servers



A lockable secure storage cage



High security storage cage



A bespoke security cage, lockable with sliding doors. Bespoke cages and strong rooms can be made to suit any application. A wide range of Safes are available for supply and installation

YOUR FUTURE SECURED





Harling Security Solutions

Regent house
Queens Road
Barnet
Herts EN5 4DN

Tel: +44 (0)84 5177 0540

Fax: +44 (0)84 5177 0541

Email: sales@harlingsecurity.com

Web: www.harling-security.co.uk